

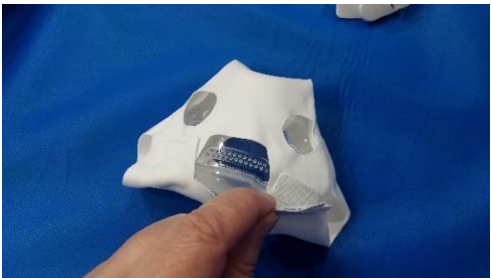


# PAD A CHEEK®

## Mask Liner FFG

AirFit F30i and AirFit F30

### AirFit F30i instructions



1. Lay the **PAD A CHEEK Mask Liner** out with the legs pointing down and the two holes visible.
2. Place the cushion of the mask under the top layer of the mask liner, face down placing the mouth opening of the mask cushion over the large oval hole in the liner.
4. The nose hole in the cushion should line up with the smaller hole in the mask liner.
5. Make sure the holes for the headgear line up with the two holes of the mask liner where the finger is going through. Second Photo
7. Pull the legs up and connect the Velcro to secure the mask liner on both sides. Third Photo
8. Re attach the headgear by snapping the clips into the holes on the side of the cushion, push the seam away from the hole so it does not interfere with the clip attaching.
9. If the holes for your nose or mouth is not large enough, trim the hole a little bit at a time to make it fit. If necessary, trim the rectangular hole near the vents.

**Make certain no exhalation vents are covered with the Mask Liner**

### AirFit F30 Instructions



Follow the instructions above except the hard plastic tabs for the headgear fits through the round holes and the hose connection will be in the rectangular opening when installed correctly. Tuck the mask liner fabric under the magnet tabs for easier access to the magnets.

If you need help with this, please email or call.

We will be happy to help you.

The **PAD A CHEEK® Mask Liner** is made from polyester micro fiber and should be hand washed with warm soapy water weekly and laid flat to air dry. If you have any questions, please contact us.

PAD A CHEEK® 434-985-4003

157 Sunset Drive, Stanardsville, VA 22973

email [admin@padacheek.com](mailto:admin@padacheek.com)

web site [www.padacheek.com](http://www.padacheek.com)

Designed and Sewn in the USA